

Насосы из нержавеющей стали

Технические характеристики

По вопросам продаж и поддержки обращайтесь:

Алматы (727)345-47-04
Ангарск (3955)60-70-56
Архангельск (8182)63-90-72
Астрахань (8512)99-46-04
Барнаул (3852)73-04-60
Белгород (4722)40-23-64
Благовещенск (4162)22-76-07
Брянск (4832)59-03-52
Владивосток (423)249-28-31
Владикавказ (8672)28-90-48
Владимир (4922)49-43-18
Волгоград (844)278-03-48
Вологда (8172)26-41-59
Воронеж (473)204-51-73
Екатеринбург (343)384-55-89

Иваново (4932)77-34-06
Ижевск (3412)26-03-58
Иркутск (395)279-98-46
Казань (843)206-01-48
Калининград (4012)72-03-81
Калуга (4842)92-23-67
Кемерово (3842)65-04-62
Киров (8332)68-02-04
Коломна (4966)23-41-49
Кострома (4942)77-07-48
Краснодар (861)203-40-90
Красноярск (391)204-63-61
Курск (4712)77-13-04
Курган (3522)50-90-47
Липецк (4742)52-20-81

Магнитогорск (3519)55-03-13
Москва (495)268-04-70
Мурманск (8152)59-64-93
Набережные Челны (8552)20-53-41
Нижний Новгород (831)429-08-12
Новокузнецк (3843)20-46-81
Ноябрьск (3496)41-32-12
Новосибирск (383)227-86-73
Омск (3812)21-46-40
Орел (4862)44-53-42
Оренбург (3532)37-68-04
Пенза (8412)22-31-16
Петрозаводск (8142)55-98-37
Псков (8112)59-10-37
Пермь (342)205-81-47

Ростов-на-Дону (863)308-18-15
Рязань (4912)46-61-64
Самара (846)206-03-16
Санкт-Петербург (812)309-46-40
Саратов (845)249-38-78
Севастополь (8692)22-31-93
Саранск (8342)22-96-24
Симферополь (3652)67-13-56
Смоленск (4812)29-41-54
Сочи (862)225-72-31
Ставрополь (8652)20-65-13
Сургут (3462)77-98-35
Сыктывкар (8212)25-95-17
Тамбов (4752)50-40-97
Тверь (4822)63-31-35

Тольятти (8482)63-91-07
Томск (3822)98-41-53
Тула (4872)33-79-87
Тюмень (3452)66-21-18
Ульяновск (8422)24-23-59
Улан-Удэ (3012)59-97-51
Уфа (347)229-48-12
Хабаровск (4212)92-98-04
Чебоксары (8352)28-53-07
Челябинск (351)202-03-61
Череповец (8202)49-02-64
Чита (3022)38-34-83
Якутск (4112)23-90-97
Ярославль (4852)69-52-93

Россия +7(495)268-04-70

Казахстан +(727)345-47-04

Беларусь +(375)257-127-884

Узбекистан +998(71)205-18-59

Киргизия +996(312)96-26-47

эл.почта: gef@nt-rt.ru || сайт: <https://gruen.nt-rt.ru/>

WITH MECHANICAL SEAL
AND SEALLESS

fine thing



DRUM PUMPS STAINLESS STEEL

IF NO CONTAMINATION AND PRODUCT
CARRYOVER IS ALLOWED

FOOD

BEVERAGE

PHARMACEUTICAL

COSMETICS

Drum pumps stainless steel with mechanical seal (MS) and sealless (SL)

DRUM PUMPS STAINLESS STEEL

IF EASY CLEANING, DURABILITY AND EXPLOSION-PROOF ARE REQUIRED



PAINTS + COATINGS



ACIDS + BASES



SOLVENTS



SPECIAL APPLICATIONS, PLANT ENGINEERING

Our new pumps!

The quickest way to get to know us is to contact us directly. Save your precious time. Contact us and we will do the rest for you. Consulting service, product selection, project planning assistance and quote – fast and all free of charge.

Advantages

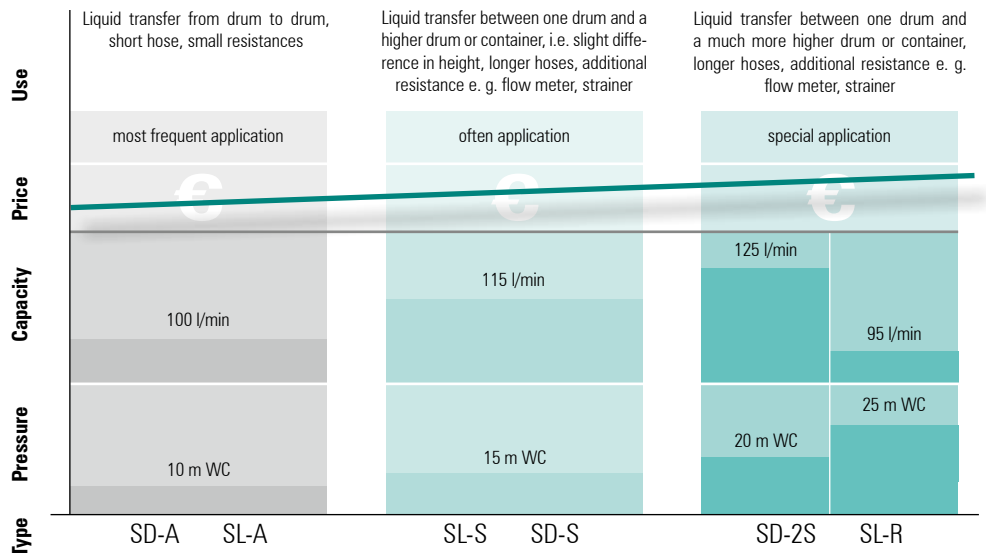
more ...

- practical
- variable
- complete
- hygienic
- solid
- robust
- imaginative
- fit for use
- modular
- individual

Sealed and sealless pumps types have grown closer to one another







The SD (Simple Disassembly) series is sealed with a mechanical seal (MS). In the SL series (sealless) there is an inner tube in the pump tube. The leakage unit depressurises the inner tube. The drive shaft is running within the inner tube. With no pressure difference between the inner tube and the outside ambient air no liquid can leave the pump, where the drive shaft comes out from the pump head. The pump is therefore always without leakage at the pump head.

The right pump for your application



drum pumps stainless steel with features for the top position

DRUM PUMPS STAINLESS STEEL

	Simple Disassembly SD-SS-	A	S	Sealles SL-SS-
What is important for your application				
large capacity		X		
high pressure			X	
viscosity up to 1.500 mPas (pd500)			X	
hydraulic tuning			X	
many different liquids				X
mixing function				
simple disassembly (SD)	X			
easy to clean	X			X
explosion proof				
continous work with induction motor			X	
tube length	container size	ord.-no.		
700 mm	hobcock 30l	631-0001	631-0006	
1000 mm	drum up to 220 l	631-0002	631-0007	
1200 mm	IBC up to 1000 l	631-0003	631-0008	
> 1200 mm	special container	on demand	on demand	
electrical motors without explosion proof				
p310 optimised in price	preferred combination	X		
p400 the ideal drive	improved hydr. performance	X	X	
pd500 silent worker	smooth product treatment		X	
electrical motors with explosion proof				
EX700 for hazardous locations	safety by power	X	X	
pd500 Ex	smooth product treatment		X	
compressed air motor for all applications				
d600 for hazardous locations	the power drive	X	X	



Misering Pump Sealless MP-SL-SS-			Magnetic Drive Mag-SS-				
A	R	S	A	R	S	A	R
X				X			X
	X	X			X		
		X			X		
	X	X		X			
			X			hermetically sealed	
			X				
						no	
		X			X		

ord.-no.	ord.-no.	ord.-no.	ord.-no.	ord.-no.	ord.-no.	ord.-no.	ord.-no.
691-0001	696-0001	691-0006	691-0011	696-0011	691-0016	631-0021	636-0021
691-0002	696-0002	691-0007	691-0012	696-0012	691-0017	631-0022	636-0021
691-0003	696-0003	691-0008	691-0013	696-0013	691-0018	631-0023	636-0021
on demand	on demand	on demand	on demand	on demand	on demand	on demand	on demand

X				X			X
X	X	X		X	X	X	X
		X				X	
X	X	X		X	X	X	
		X				X	
X	X	X		X	X	X	

Drive motors, select the best drive for every

p310 optimised in price

p400 the ideal drive



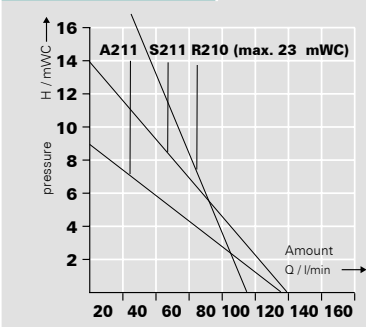
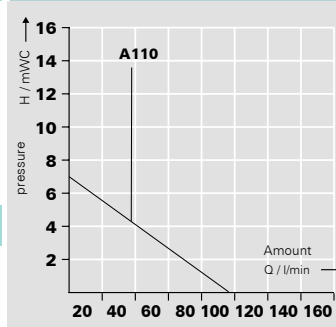
properties	short and occasional use, it likes light and thin liquids, internal cooling	big resources in power and durability, works quickly and saves time, internal cooling
options	low voltage release (LVR) recommended according to EU-directives, speed redu- cer (SR) varies pressure and capacity	low voltage release (LVR) recommended according to EU-directives, speed reducer (SR) varies pressure and capacity, IP54 with TEFC (MA)
data		
power (W)	520	
voltage (V)	230	120
protection class	IP24	
LVR*	optional	
SR**	optional	
weight (kg)	3,5	
	type of impeller s. p. 4/5	
max. spec. gravity (kg/l)	A	1,4
max. viscosity (mPas)	250	

	ord.-no		ord.-no	
with LVR*	500-0016	500-0028	500-0023	500-0025
with SR** and LVR	500-0074	500-0060	500-0069	500-0066
without LVR	500-0017	500-0029	500-0024	500-0026
without LVR with SR	500-0054	500-0057	500-0056	500-0063
magnetic clutch , LVR	500-0030	500-0032	500-0034	500-0036
magnetic clutch , LVR, SR	500-0061	500-0062	500-0067	500-0068
TEFC (MA) IP54			500-0072	

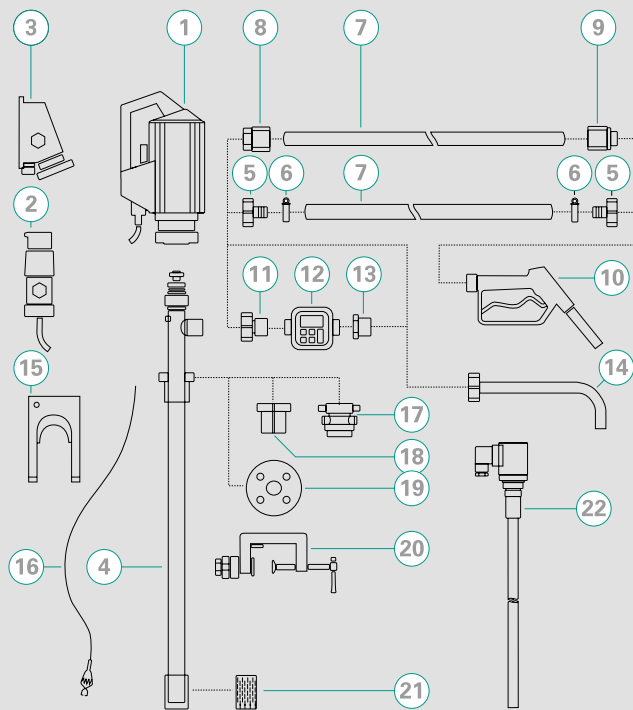
characteristics

* low voltage release
** speed reducer

recommended types



ACCESSORIES



- 1 Drive motor
- 2 Explosion-proof plug
- 3 Explosion-proof socket
- 4 Pump tube
- 5 Hose connector
- 6 Hose clamps
- 7 Hose
- 8 Hose fittings
- 9 Hose fittings
- 10 Nozzle
- 11 Flow meter connection
- 12 Flow meter
- 13 Reducing piece
- 14 Discharge spout
- 15 Wall bracket
- 16 Equipotential bonding cable
- 17 Emission proof drum adapter
- 18 Drum adapter
- 19 Installation flange
- 20 Clamping device
- 21 Foot strainer
- 22 Level switch

По вопросам продаж и поддержки обращайтесь:

Алматы (727)345-47-04
Ангарск (3955)60-70-56
Архангельск (8182)63-90-72
Астрахань (8512)99-46-04
Барнаул (3852)73-04-60
Белгород (4722)40-23-64
Благовещенск (4162)22-76-07
Брянск (4832)59-03-52
Владивосток (423)249-28-31
Владикавказ (8672)28-90-48
Владимир (4922)49-43-18
Волгоград (844)278-03-48
Вологда (8172)26-41-59
Воронеж (473)204-51-73
Екатеринбург (343)384-55-89

Иваново (4932)77-34-06
Ижевск (3412)26-03-58
Иркутск (395)279-98-46
Казань (843)206-01-48
Калининград (4012)72-03-81
Калуга (4842)92-23-67
Кемерово (3842)65-04-62
Киров (8332)68-02-04
Коломна (4966)23-41-49
Кострома (4942)77-07-48
Краснодар (861)203-40-90
Красноярск (391)204-63-61
Курск (4712)77-13-04
Курган (3522)50-90-47
Липецк (4742)52-20-81

Магнитогорск (3519)55-03-13
Москва (495)268-04-70
Мурманск (8152)59-64-93
Набережные Челны (8552)20-53-41
Нижний Новгород (831)429-08-12
Новокузнецк (3843)20-46-81
Ноябрьск (3496)41-32-12
Новосибирск (383)227-86-73
Омск (3812)21-46-40
Орел (4862)44-53-42
Оренбург (3532)37-68-04
Пенза (8412)22-31-16
Петрозаводск (8142)55-98-37
Псков (8112)59-10-37
Пермь (342)205-81-47

Ростов-на-Дону (863)308-18-15
Рязань (4912)46-61-64
Самара (846)206-03-16
Санкт-Петербург (812)309-46-40
Саратов (845)249-38-78
Севастополь (8692)22-31-93
Саранск (8342)22-96-24
Симферополь (3652)67-13-56
Смоленск (4812)29-41-54
Сочи (862)225-72-31
Ставрополь (8652)20-65-13
Сургут (3462)77-98-35
Сыктывкар (8212)25-95-17
Тамбов (4752)50-40-97
Тверь (4822)63-31-35

Тольятти (8482)63-91-07
Томск (3822)98-41-53
Тула (4872)33-79-87
Тюмень (3452)66-21-18
Ульяновск (8422)24-23-59
Улан-Уда (3012)59-97-51
Уфа (347)229-48-12
Хабаровск (4212)92-98-04
Чебоксары (8352)28-53-07
Челябинск (351)202-03-61
Череповец (8202)49-02-64
Чита (3022)38-34-83
Якутск (4112)23-90-97
Ярославль (4852)69-52-93

Россия +7(495)268-04-70

Казахстан +(727)345-47-04

Беларусь +(375)257-127-884

Узбекистан +998(71)205-18-59

Киргизия +996(312)96-26-47

эл.почта: gef@nt-rt.ru || сайт: <https://gruen.nt-rt.ru/>